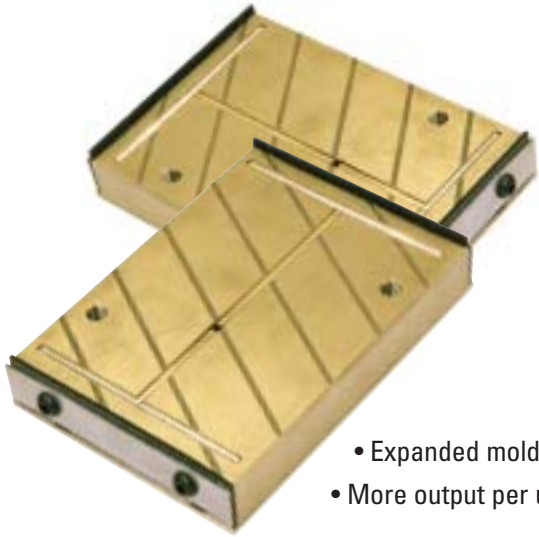


D-M-E Multi-Parting Line Systems

More productivity
in less space





Comprehensive options for high-productivity

Today's plastics processor has to do more with less – less labor, less capital investment, less floor space, and less time. Multi-Parting Line (MPL) systems double the cavitation of a standard single-face mold without an increase in machine tonnage. Key benefits of MPL systems include:

- Cost-effective solution for increasing capacity
- Optimum use of shop floor space and machine capacity
- Expanded molding capacity without capital expenditures
- More output per unit of shop floor labor – higher productivity in your operation

Multi Parting Line systems are ideally suited for automotive, housewares, caps and closures, cutlery, and electronic parts.

D-M-E, in collaboration with Milacron, offers an industry-leading range of MPL systems, including:

- Stack Molds
 - Rack & Gear
 - Spline & Nut
 - Harmonic Arms
- Tandem Molds
- Dual Mold Carriers
- Turnkey solutions
- Injection molding presses specifically designed for MPL mold systems
- Design Services – design assistance or complete system design



With D-M-E MPL systems – the choice is yours. Our systems feature complete flexibility – built around a family of product standards that simplify implementation. Only D-M-E gives you this wide range of choices. And, because they're from D-M-E, you can expect reliability, advanced engineering, and outstanding performance.

D-M-E delivers critical expertise with mold technology, while Milacron offers high-performance injection molding machinery when the application demands it. The combination is unbeatable.

D-M-E Multi-Parting Line Systems

Turnkey systems deliver a total solution

When you choose D-M-E as your partner for MPL systems, you're choosing a total solution. How big that solution is, will be your choice. We can deliver a turnkey molding system (excluding the cores and cavities) including a molding machine.

Our turnkey systems may include:

- Mold bases
- Hot runner systems and controllers
- Components – including centering and actuation devices
- System assembly
- Injection molding machines



Standard Stack Mold Components

D-M-E also supplies a full line of standard Stack Mold Components. These standard components are available off-the-shelf and can be ordered for immediate shipment to meet your needs. Experienced mold designers can customize an MPL system to meet their needs by using our easy to follow standards.

All D-M-E MPL components have been designed for optimal utility and reliability. Because D-M-E delivers industry-leading expertise with MPL systems, we're able to provide a world-class, integrated solution with all systems and components operating at optimum efficiency.



Engineering expertise ensures success

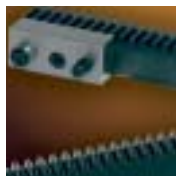
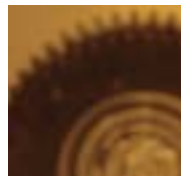
The D-M-E design and engineering team delivers over six decades of experience with injection molding, and injection mold design. Our engineering services can quickly scale to meet the specific needs of your program. Our designers can assist in the choice and application of our rigorously engineered and proven MPL Components and Hot Runner Systems. We can offer the hot runner package alone, or we can handle the entire stack mold design, configuration, and assembly – including the mold base, centering and actuating components, hot runner system, and temperature controller.

Stack systems

Only D-M-E offers a choice of three centering actuation systems to suit your requirements – including Rack & Gear, Spline & Nut, and Harmonic Arms. We also offer a choice of center support configurations – including support on the tie bars (top, bottom, or both), on the machine ways, or on both the ways and tie bars. Ejection can be accomplished via machine knock-outs (moving platen only), or using hydraulic, pneumatic, or mechanical actuation. In addition, D-M-E has extensive experience in hot runner systems and offers three types of stack mold melt-delivery systems – Long Sprue Bar, Short Sprue Bar, and Offset Sprue Bar.

For six decades, D-M-E has been based on a simple premise – to help moldmakers, molders, and mold designers be more efficient. Our family of hot runner solutions is just one part of that commitment. By offering a high quality portfolio of advanced products, knowledgeable technical resources, and a full complement of service and support, we can help make your operation more productive and more profitable. All D-M-E products feature best-in-class components, application engineering expertise, and our 100% satisfaction guarantee.

Serving customers in over 70 countries worldwide, no one equals D-M-E for injection molding solutions and support. D-M-E operates engineering, manufacturing, and distribution locations in North America, South America, Europe, and Asia.



D-M-E Company
World Headquarters
 29111 Stephenson Highway
 Madison Heights, MI 48071
 800-626-6653 *toll free*
 248-398-6000 *tel*
 888-808-4363 *fax*
 appl_eng@dme.net *e-mail*
 www.dme.net *web*

D-M-E of Canada, Ltd.
 6210 Northwest Drive
 Mississauga, Ontario, L4V 1J6
 800-387-6600 *toll free*
 905-677-6370 *tel*
 800-461-9965 *fax*

D-M-E Europe
 Industriepark Noord
 B-2800 Mechelen, Belgium
 32-15-215011 *tel*
 32-15-218235 *fax*

